

# PennDOT Infrared Bridge Deck Scanning

## SUMMARY

In 2016, NEXCO-West USA worked with Pennsylvania's Department of Transportation to quantify and map rebar level delamination in the top of a target bridge deck in Lancaster, PA. An analysis was produced based off visual and thermal data acquired at posted roadway speed limits.

Our field team also conducted a hands-on inspection of the bridge to help verify and supplement the NDE data collected. Quantities of deficient areas were finalized in a plan-view map and exported to a CAD file for delivery. The client used the CAD file to support their own reporting process to the bridge owner.



## OVERVIEW

**Client:**

PennDOT

**Contact info:**

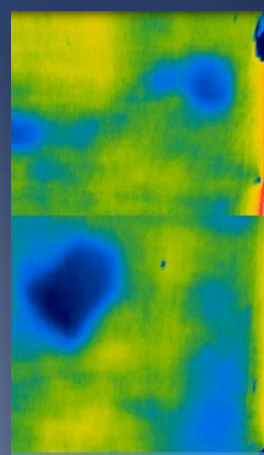
Mr. Scott Stock  
sstock@mackinengineering.com  
(717-774-8900)

**Quantity:**

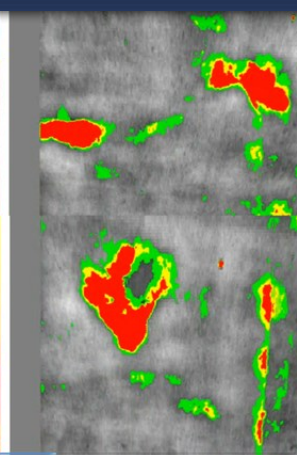
The total deck area is  
45,360 sqft

**Project period:**

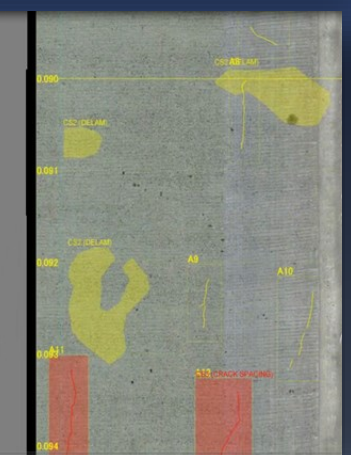
May 2016 - Apr.2017



Original infrared data



Processed infrared data



2D visual scan

**NEXCO - West USA**

**8300 Boone Blvd. Suite 260**

**Vienna, VA 22182**

**+1 (703) 734 - 0281**

**info@w-nexco-usa.com**

**www.w-nexco-usa.com**